

# THE LEGACY CONTINUES...

The Legacy Continues is a vision to enhance our campus and build our community.



## Our Objectives

The Legacy Continues' (TLC's) focus will be campus enhancements to help grow our ministry and build community. To do this we'll allocate funds towards 4 areas:

1. Property repairs and improvements
2. Staffing additions
3. Budget optimization
4. Debt reduction

## EMMANUEL BAPTIST CHURCH

467 N. White Road · San Jose, CA 95127  
(408) 272-1360  
[www.emmanuelbc.org](http://www.emmanuelbc.org)

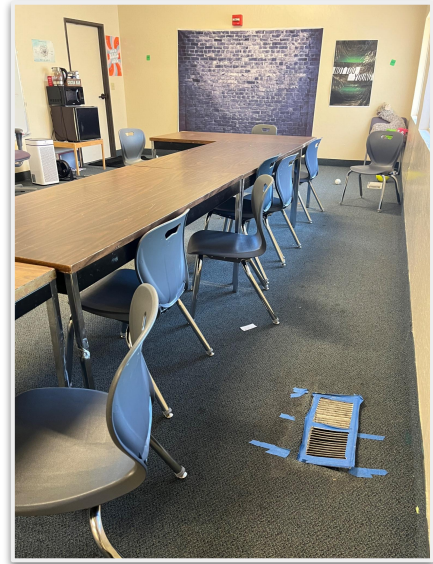
## Our Approach

TLC is a significant vision. It will require significant time, prayer, and sacrifice to complete.

As a result, our plan will divide the full renovation into phases. This approach will offer the space and time to make meaningful progress, assess our situation, and adjust as necessary to achieve our goals.

## Phase 1 Project List

- FLC Flooring Replacement
- FLC Elevator
- Sanctuary Bathrooms
- Agape Bathrooms
- Agape Hall
- CTY & Legacy Prep Classrooms
- Sanctuary Lobby
- Outside Agape Seating
- Exterior Staircase



## Proposed 2024 Timeline / Milestones



## Next Steps

**Prayer** – We need God’s guidance on all over TLC. So before we move forward we need everyone to unite in prayer about proceeding.

**Feedback** – After prayer we want to hear from you. Do you agree with the direction? What additional ideas or thoughts do you have?

**Prioritization** – We also want your help to prioritize the allocation of funds Phase 1 should be prioritized for completion.



### FAQs

Have a question? Read the most frequently asked questions and answers at the QR code or at <https://bit.ly/etlc-faq>.



### Feedback

Have feedback or a question you don’t see listed in the FAQ? Access the form at the QR code or at <https://bit.ly/etlc-feedback>